

Three operating languages on option

The software provided with the Calibration Bench can be set in three different languages: French, English or Italian. (Other languages can be provided on request).

One tool for your entire gas detector product range

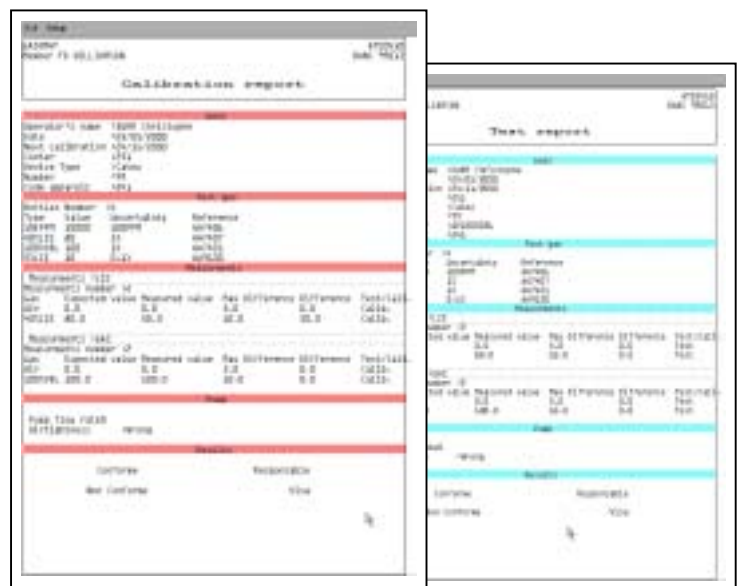
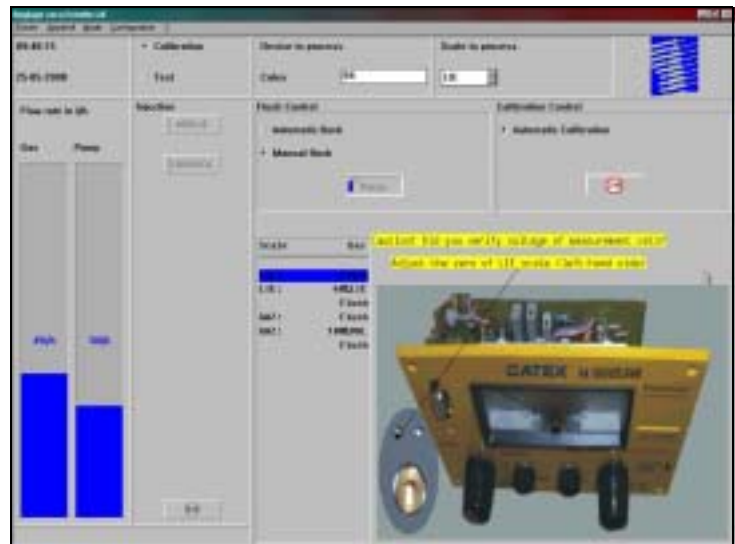
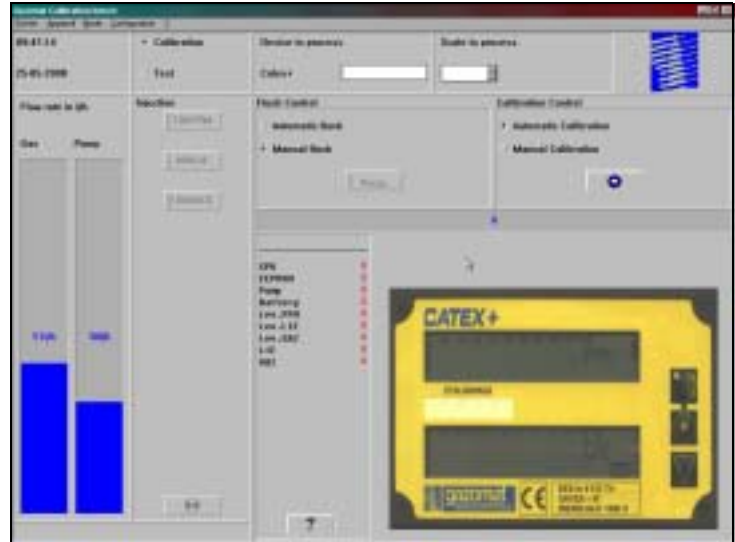
- The list of detectors that the Calibration Bench can verify is extendable. By default, the software can adjust the Catex, Catex+ and Catex+Duo from the Gazomat product line, but also detectors from other manufacturers (G2, G3, G10000, SR4, GD2000).
- Four test gas bottles of 1 litre and electrovalves are supplied with the unit. The customer can select the test gases required and the system allows the operator to configure the test sequence as required for detectors from other manufacturers.

A checking function as a plus

- Besides adjustment, the Calibration Bench performs functional checks on the detectors. It can :
 - Check the flowrate of the detectors during the verification process.
 - Check the airtightness of the aspiration circuit of the detector.
- For the Gazomat digital detectors (Catex+ and Catex+Duo), a test of the key functions is automatically performed (microcontroller, EEPROM, Pump, batteries, voltage, etc.)
- For all other detectors, a visual display is provided to the operator in the form of messages during the verification process.

Quality Control documentation

- Reference gases comply with international references.
- Traceability of the reference gases is maintained in the software.
- History files are maintained on each detector being calibrated.
- The operator can print a calibration/verification report or a test report, which authenticates officially the whole calibration or testing procedure.
- All sequences of the verification/adjustment process are programmed and are therefore repetitive. However, if needed, the Calibration Bench can still be operated in the manual mode, for a greater flexibility of use.



Calibration Bench

*A fully autonomous
and portable calibration station*



*The Gazomat
Calibration Bench
is designed to
either check a unit's
current calibration or
provide automatic
or manual verification
and adjustment
of gas detectors.*

*The unit provides
Quality Control
documentation for your
entire gas detector
product range.*



Easy to start up

- Provided with its proprietary software, the Calibration Bench is controlled and operated by a laptop or a desktop PC (PC provided separately). The unit works with Windows 3.1, 3.11, 95 or 98, and requires a 220 V power source (110 V AC upon request).
- Software installation is simple and the verification process is explained in the windows displayed on screen.
- With less than 30 kg, the Calibration Bench can be easily moved and transported, always ready for use.

Technical sheet

Required equipment :

- 1 laptop or desktop PC (not supplied with the calibration bench)
- Windows 3.1, 3.11, 95 ou 98 (not supplied with the bench)
- 220/110 V power source or 12 V source (for connection to vehicle)
- 4 reference gas bottles of 1 litre

Simplified functions :

- 3 operating languages : French, English, Italian
- Other languages upon request
- Automatic or manual verification and adjustment.
- Verification and adjustment of gas leak detectors from Gazomat and from other manufacturers
- Printing of calibration/verification reports or of test reports
- Visual assistance in the form of messages

Weight and dimensions :

- Weight (with bottles) : 27 kg
- Dimensions (with bottles) : 560 x 450 x 370 mm